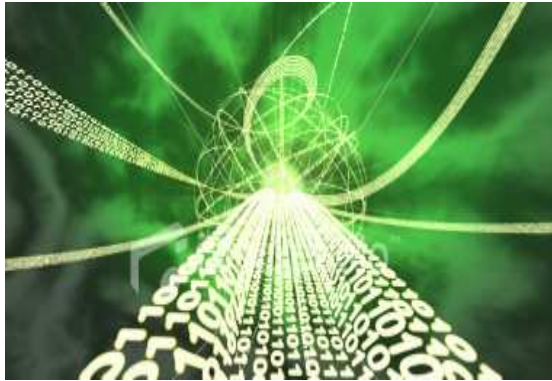


## Enterprise Connect (Bonded ADSL)



### What is Enterprise Connect?

Intouch Advance lead the way in offering innovative solutions to businesses both small and large. Enterprise Connect, our bonded ADSL service, is just one solution that offers unrivalled quality and functionality.

Intouch Advance can provide a perfect compliment to ADSL technology, allowing multiple ADSL connections to be physically bonded presenting a single fat pipe to the internet maximising the potential for downloads and uploads. Enterprise Connect offers scalability, flexibility and unrivalled performance with the added benefit of resilience.

### What technology does Enterprise Connect use?

Enterprise Connect doesn't not use Multilink PPP. Instead it uses a tunnelling model where connections are bonded back to state of the art datacentres.

Development of this model has taken 3 years to master and we believe it is the best solution on the market. Enterprise Connect is built on Linux and uses CISCO ADSL and SDSL routers. Multilink PPP uses a different process which we believe through testing is not as flexible or reliable, leaving many ISP's dropping Multilink PPP.

### How is Enterprise Connect delivered?

Enterprise Connect is delivered on a 1U appliance, an unmanaged switch and a CISCO router for each connection. EC sits on the edge of your network and does not interfere with your network at any stage. Installation of the EC solution is carried out by a qualified engineer and is fully managed by Intouch Advance and our technology partner, Vaioni.

### What flavours does Enterprise Connect come in?

EC comes in a variety of flavours. There are options to run the solution as a rented service just like a phone line or ADSL service or can be bought as a service where all hardware is owned by you.

EC can be ordered as follows:

- EC2 - allows you to bond two ADSL lines
- EC4 - Allows you to bond up to 4 ADSL lines
- EC6 - Allows you to bond up to 6 ADSL lines
- EC8 - Allows you to bond up to 8 ADSL lines
- EC10 - Allows you to bond up to 10 lines

### What ADSL technology does Enterprise Connect support?

EC supports all types of ADSL technology. We understand that ADSL and other types of connectivity will be deployed as technology progresses, that's why EC is continually developed to support all internet type technologies including ADSL, SDSL, Leased Lines, Future ADSL (VADSL / ADSL2+).

### Where should Enterprise Connect be used?

EC was developed to help businesses and organizations increase the limitations of current ADSL services. Most businesses we have helped are either too far from the Exchange to receive the adequate speeds, or require faster upload speeds or just need faster speeds all round.

## What happens if I want to add more lines to my existing Enterprise Connect?

EC is a scalable solution which provides the ability to add more lines as and when you need to without the need to replace equipment, unlike most other solution on the market which require you to replace equipment at certain intervals. All that is required is an extra BT phone line, ADSL service and an ADSL router.

## Can we buy the ADSL lines off another provider?

Yes. Enterprise Connect can recognise ADSL lines from any other provider and bond them equally as well. The only addition to the service is an overhead charge as we need to double up our bandwidth for each connection that is a none Intouch ADSL connection. This overhead charge of £15 per connection per month.

### *Example scenario*

This could be 4 x 2mb ADSL lines, providing 8Mb download and 1Mb upload or even 4 x 2Mb ADSL lines offering 8mb download and 8mb upload. The Enterprise Connect solution eliminates the need for any other device to load balance, route or bond your ADSL lines. EC will do all of this within the product. Businesses benefit from not only faster connections, but also from increased reliability and tolerance.

## Additional modules

*Web caching*, using VGL's scalable high performance V-CachNet to cache sites, HTML pages and various degrees of content, images, databases, e-learning content for a faster more efficient way of accessing regularly accessed web content and also saving up to 50% of your bandwidth usage.

*Bandwidth Management*, to manage how much and how often applications, users, groups and departments can access the web. A comprehensive method of managing your bandwidth efficiently.

*Web Content Filtering*, using advanced filtering techniques to filter unwanted or

illegal web content from being displayed onto users machines, including URL blocking, picture blocking, text and HTML blocking,

file extension and MIME filtering, IP address blocking and many other features to make this a very comprehensive and leading Web Content Filtering system.

*Proxy Server*, to manage who and at what times users, groups and departments can access the web. Access control can be done in a variety of forms, including through ip, username and password and MAC addressing control. It offers the main function of controlling access to the web, applications, content type and even destination. IPSEC VPN, to provide a corporate class, secure and fast VPN service using the latest in security technology IPSEC. This solution is comparable to what is currently used in Checkpoint, PIX and other leading VPN devices. Create secure, fast and flexible VPN connections to sites or for road warriors.

## To find out More:

Please call Intouch Advance on 0844 568 00 00 or visit our website at

[www.intouchadvance.co.uk](http://www.intouchadvance.co.uk)

